



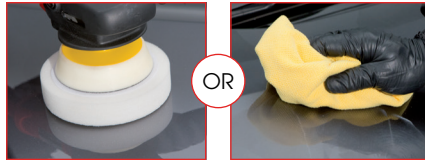
Remove Defect

- Wet Use Sanding**
- G Sand Denibbing **GSD320**
 - Rose P2000
 - G Sand Denibbing Block **GSA301**
 - G Sand Waterproof Half Sheets P1500 **GSW115**
 - G Sand Waterproof Half Sheets P2000 **GSW120**
 - G Sand Flattening Block **GSA012**
- Dry Use Sanding**
- G Sand 75mm Abrasive Film Discs P1200 **GSD712**
 - G Sand 75mm Abrasive Film Discs P1500 **GSD715**
 - G Sand 75mm Abrasive Film Discs P2000 **GSD720**
 - G Sand 75mm Abrasive Foam Discs P3000 **GS3701**
 - G Sand 150mm Abrasive Film Discs P1200 **GSD112**
 - G Sand 150mm Abrasive Film Discs P1500 **GSD115**
 - G Sand 150mm Abrasive Film Discs P2000 **GSD120**
 - G Sand 150mm Abrasive Foam Discs P3000 **GS3101**
 - G Sand 150mm Interface Pad **GSA106**

G3 Regular Grade System Process Chart

For Medium & High Solids Paint Systems

1. Compounding



G3 Regular Grade

Paste Compound



Product Size
250g
400g
1kg
3kg

Codes
G3-250
G3-400
G3-1000
G3-3000

Applicators

G Mop 6" Wet Use Compounding Foam **GMC606**
G Mop 8" Wet Use Compounding Foam **GMC806**

BY MACHINE



BY HAND



2. Finishing



G3 Fine

Finishing Compound

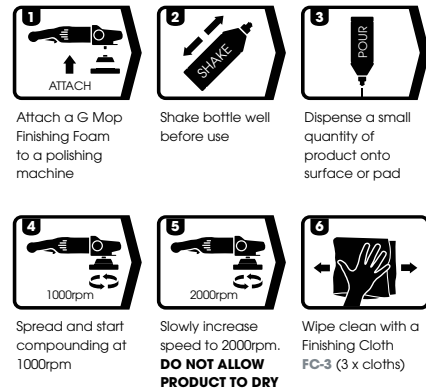


Product Size
500g
1kg
1 US gallon

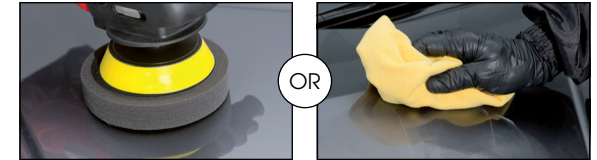
Codes
G3F501
G3F101
G3F118

Applicators

G Mop 3" Finishing Foam **GMF301**
G Mop 6" Finishing Foam **GMF601**
G Mop 8" Finishing Foam **GMF801**



3. Protecting



G3 Glaze

Gloss Enhancer



Product Size
500ml
1 ltr
1 US gallon

Codes
G3G501
G3G101
G3G118

G3 Wax

Premium Liquid Protection



Product Size
500ml
1 ltr
1 US gallon

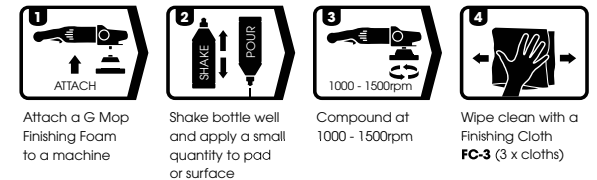
Codes
G3W501
G3W106
G3W118

Applicators for both products

G Mop 3" Finishing Foam
G Mop 6" Finishing Foam
G Mop 8" Finishing Foam
Finishing Cloth (3 x cloths)

Codes
GMF301
GMF601
GMF801
FC-3

G3 Glaze - Primary Application by machine



G3 Wax - Primary Application by hand

